

# ELLIS

Holding Power

## CARBON FOOTPRINT REPORT

1<sup>st</sup> March 2025 – 28<sup>th</sup> February 2026



TRIED, TESTED, TRUSTED.  
WORLDWIDE

### 1. Outline

Carbon footprint report of Ellis Patents Ltd. From 01<sup>st</sup> March 2025 to 28<sup>th</sup> February 2026.

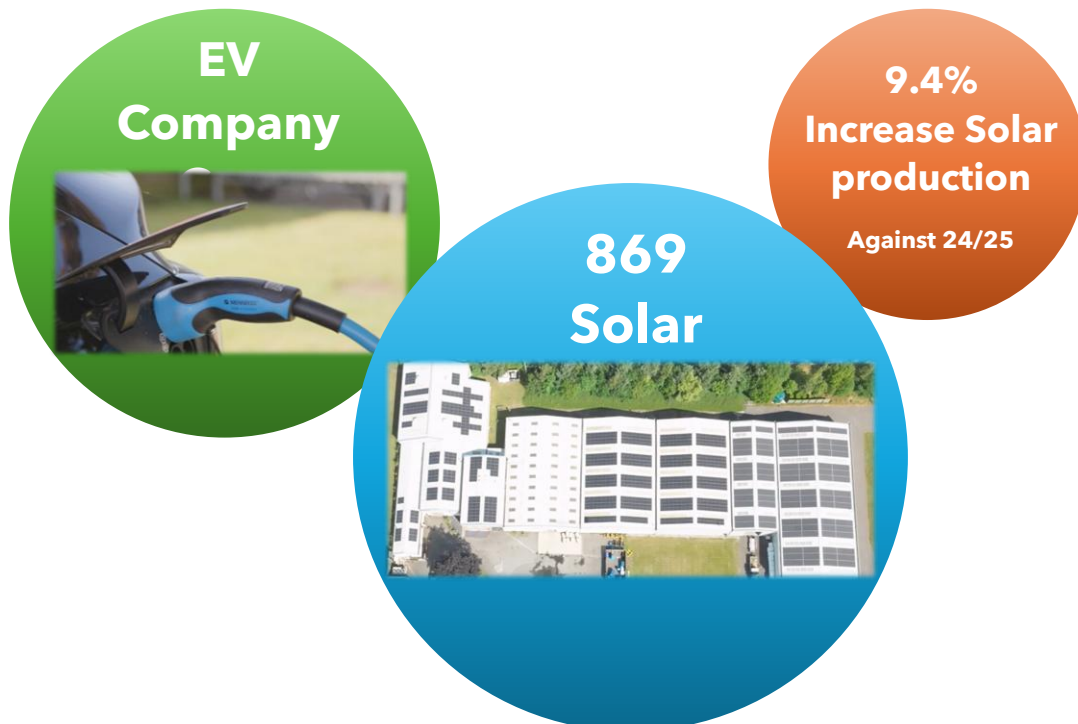
Ellis Patents Ltd. emitted 143 tCO<sub>2</sub>e (tons of carbon dioxide equivalent) in 2025/26 (across scope 1 & 2). This value has an intensity indicator of 1.88 tCO<sub>2</sub>e per full-time equivalent employee (FTE) and 11.2 tCO<sub>2</sub>e per million GBP turnover (£m Turnover).

The addition of scope 3 emissions brings the total to 308 tCO<sub>2</sub>e.

Ellis has implemented significant carbon reduction measures from the year 2017/18 to 2025/26 resulting in a **57% decrease** in greenhouse gas (GHG) emissions (across scope 1 & 2). From 334 tCO<sub>2</sub>e in FY2017/18, to 143 tCO<sub>2</sub>e in FY2025/26.

Although no significant new carbon reduction projects were introduced during this reporting period, the company has maintained its commitment to sustainability through the continued operation and optimisation of existing initiatives. These include the use of on-site solar generation, site-wide LED lighting, the gradual electrifications of the company vehicle fleet, and ongoing energy-efficiency measures focused on manufacturing equipment and facility operations.

Across the year FY2025/26, Ellis generated 291,490kWh and exported 43,920 kWh renewable energy back to the National Grid. This is enough energy to power over 14 homes UK homes for an entire year or the equivalent to 439,000 individual kettle boils.



## 2. Methodology & Definitions

### **Methodology**

TRACC methodology has been implemented to produce the data for the carbon footprint reports in line with the GHG Protocol, maintaining:

- Transparency
- Relevance
- Accuracy
- Consistency
- Completeness

The DESNZ GHG Conversion Factors 2025 have been used to translate the data collected into CO<sub>2</sub>e GHG emissions.

CO<sub>2</sub>e is the universal unit of measurement used to represent the global warming potential (GWP) of greenhouse gases (GHGs) where 1 kgCO<sub>2</sub>e = GWP of 1 kg CO<sub>2</sub>. There are many different greenhouse gases with different global warming potentials, and the CO<sub>2</sub>e unit allows like for like comparison between all.

More information regarding the methodology can be provided upon request.

### **Definitions:**

£m Turnover = Million GDP Turnover

FTE = Full time Employee

GHG = Greenhouse Gases

GWP = Global Warming Potential

RF = Radiative Forcing

T&D = Transmission & Distribution

WTT = Well-to-tank

Scope 1 - Direct GHG emissions that occur from sources controlled / owned by an organisation.

Scope 2 - Indirect GHG emissions from the purchase or acquired electricity, steam, heat and cooling. Scope 2 emissions physically occur at the facility where they are generated, but they are included in an organisation's GHG emissions because they are a result of the organisation's energy use.

Scope 3 - Indirect GHG emissions from activities from assets not owned or controlled by the reporting organisation, but that the organisation indirectly affects in its value chain. This includes upstream and downstream activities.

### 3. Results

Table 1. GHG emissions table for period 01<sup>st</sup> March 2025 to 28<sup>th</sup> February 2026.

<b>Scope 1</b>			
<b>Emission Source</b>	<b>Unit</b>	<b>kg CO<sub>2</sub>e</b>	<b>tCO<sub>2</sub>e</b>
Burning Oil	19,500 l	49,533	49.53
Medium Car (plug-in hybrid)	9,709 km	856	0.86
Van - Average (up to 3.5 tonnes) (diesel)	33,066 km	8,452	8.45
<b>Total Scope 1</b>		<b>58,842</b>	<b>58.84</b>

<b>Scope 2</b>			
<b>Emission Source</b>	<b>Unit</b>	<b>kg CO<sub>2</sub>e</b>	<b>tCO<sub>2</sub>e</b>
UK National Grid Electricity	469,243 kWh	83,056	83.06
EV Charging	29,063 kWh	1,065	1.06
<b>Total Scope 2</b>		<b>84,121</b>	<b>84.12</b>
Exported Solar Energy	247,501 kWh	43,808	43.81
<b>Total Scope 2 minus Exported Solar Energy</b>		<b>40,313</b>	<b>40.31</b>

<b>Total Scope 1 &amp; 2</b>	<b>143.0</b>
<b>Total tCO<sub>2</sub>e per *FTE on gross Scope 1 &amp; 2</b>	<b>1.88</b>
<b>Total tCO<sub>2</sub>e per *£m Turnover on gross Scope 1 &amp; 2</b>	<b>11.2</b>

<b>Scope 3 (Category - Emission Source)</b>			
<b>Emission Source</b>	<b>Unit</b>	<b>kg CO<sub>2</sub>e</b>	<b>tCO<sub>2</sub>e</b>
1 - Water Supply	493 m <sup>3</sup>	94	0.09
1 - Water Treatment	493 m <sup>3</sup>	84	0.08
3 - Transmission & Distribution of UK National Grid Electricity	469,243kWh	8,695	8.70
3 - WTT - UK Electricity (generation)	469,243kWh	21,538	21.5
3 - WTT - UK Electricity (T&D)	469,243kWh	1,863	1.86
3 - WTT - Burning Oil	19,500 l	10,350	10.4
3 - WTT - Van - Average (up to 3.5 tonnes) (diesel)	33,066 km	2,026	2.03
5 - Waste generated in operations	65,905 kg	309	0.31
6 - Business - Medium Car (hybrid)	579 km	68	0.07
6 - Business - Average Car (diesel)	3,644 km	630	0.63

<b>Scope 3 (Category - Emission Source)</b>			
<b>Emission Source</b>	<b>Unit</b>	<b>kg CO<sub>2</sub>e</b>	<b>tCO<sub>2</sub>e</b>
6 - Business - Average Car (petrol)	595 km	97	0.10
6 - Business - Regular taxi	4,498 km	936	0.94
6 - Business - National Rail	16,045 passenger.km	569	0.57
6 - Business - Light Rail & Tram	121 passenger.km	3.45	0.003
6 - Business - London Underground	242 passenger.km	6.72	0.01
6 - Business - Local bus (not London)	614 passenger.km	64	0.06
6 - Business - Ferry (foot passenger)	6 passenger.km	0.12	0.0001
6 - Business - Flights (Domestic, Economy Class, with RF)	644 passenger.km	148	0.15
6 - Business - Flights (Short-haul, Economy Class, with RF)	77,969 passenger.km	9,805	9.81
6 - Business - Flights (Long-haul, Economy Class, with RF)	226,616 passenger.km	26,523	26.5
6 - Business - Flights (International, to/from non-UK with RF)	25,453 passenger.km	2,778	2.8
6 - Business - Hotel Stay (Various Countries)	223 nights	7,310	7.31
6 - WTT - Business - Medium Car (hybrid)	579 km	17	0.02
6 - WTT - Business - Average Car (diesel)	3,644 km	151	0.15
6 - WTT - Business - Average Car (petrol)	595 km	27	0.03
6 - WTT - Business - Regular taxi	4,498km	233	0.23
6 - WTT - Business - National Rail	16,045 passenger.km	144	0.14
6 - WTT - Business - Light Rail & Tram	121 passenger.km	0.90	0.001
6 - WTT - Business - London Underground	242 passenger.km	1.76	0.002
6 - WTT - Business - Local bus (not London)	614 passenger.km	16	0.02
6 - WTT - Business - Ferry (foot passenger)	6 passenger.km	0.0273	0.00003
6 - WTT - Business - Flights (Domestic, Economy Class, with RF)	644 passenger.km	148	0.15

<b>Scope 3 (Category - Emission Source)</b>			
<b>Emission Source</b>	<b>Unit</b>	<b>kg CO<sub>2</sub>e</b>	<b>tCO<sub>2</sub>e</b>
6 - WTT - Business - Flights (Short-haul, Economy Class, with RF)	77,969 passenger.km	1,782	1.78
6 - WTT - Business - Flights (Long-haul, Economy Class, with RF)	226,616 passenger.km	7,281	7.28
6 - WTT - Business - Flights (International, to/from non-UK with RF)	25,453 passenger.km	550	0.55
7 - Employee Commuting - Average Car (electric)	14,162 km	573	0.57
7 - Employee Commuting - Average Car (hybrid)	8,497 km	1,090	1.09
7 - Employee Commuting - Average Car (diesel)	183,816 km	31,808	31.8
7 - Employee Commuting - Average Car (petrol)	82,544 km	13,432	13.4
7 - Employee Commuting - Local bus (not London)	7,967 passenger.km	998	1.00
7 - WTT - Employee Commuting - Average Car (electric)	14,162 km	149	0.15
7 - WTT - Employee Commuting - Average Car (hybrid)	8,497 km	282	0.28
7 - WTT - Employee Commuting - Average Car (diesel)	183,816 km	7,621	7.62
7 - WTT - Employee Commuting - Average Car (petrol)	82,544 km	3,796	3.80
7 - WTT - Employee Commuting - Local bus (not London)	7,967 passenger.km	253	0.25
7 - Homeworking (office equipment + heating)	1,508 hrs	503	0.50
<b>Total Scope 3</b>		<b>164,637</b>	<b>164.64</b>
<b>Total Scope 1, 2 &amp; 3</b>			<b>307.6</b>
<b>Total tCO<sub>2</sub>e per *FTE on gross Scope 1, 2 &amp; 3</b>			<b>4.05</b>
<b>Total tCO<sub>2</sub>e per *£m Turnover on gross Scope 1, 2 &amp; 3</b>			<b>24.16</b>

Notes: For 01<sup>st</sup> March 2025 to 28<sup>th</sup> February 2026 the number of FTE's was 76 and the turnover was £12,730,475.

### 4. Results Analysis & Carbon Reduction

ELLIS has reduced its carbon footprint significantly since FY2017/18. Across scope 1 & 2 a 57% overall reduction. Comparing intensity factors (per FTE / £m Turnover) across scope 1 & 2 the reduction is greater than 65%.

Table 2. Emissions over time per scope.

Scope	FY2017/18 (tCO <sub>2</sub> e)	FY2023/24 (tCO <sub>2</sub> e)	FY2024/25 (tCO <sub>2</sub> e)	FY2025/26 (tCO <sub>2</sub> e)	% Change from Base Line
1	122	64	67	59	-52%
2	212	82	83	84	-60%
3	202	147	133	165	-19%
1 & 2	334	146	150	143	-57%
1, 2 & 3	537	294	283	308	-43%

Figure 1. Emissions over time per scope.

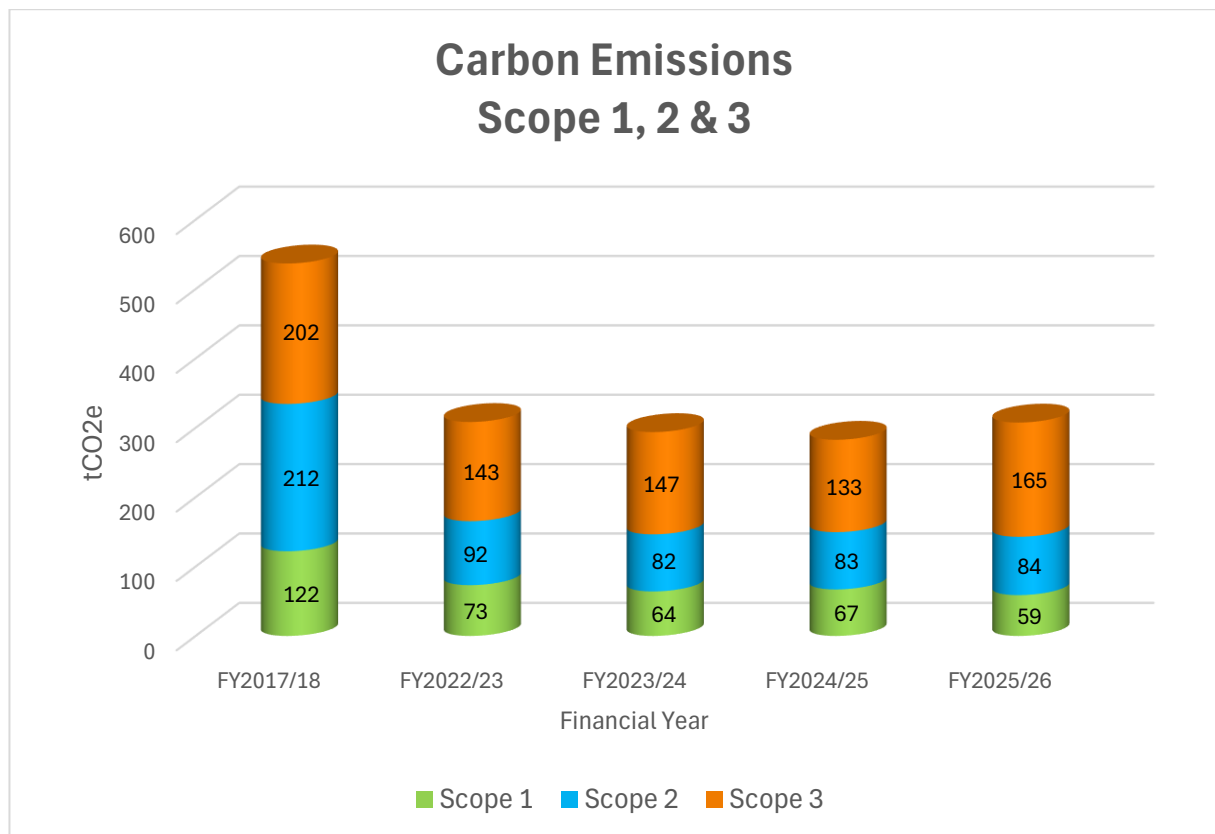


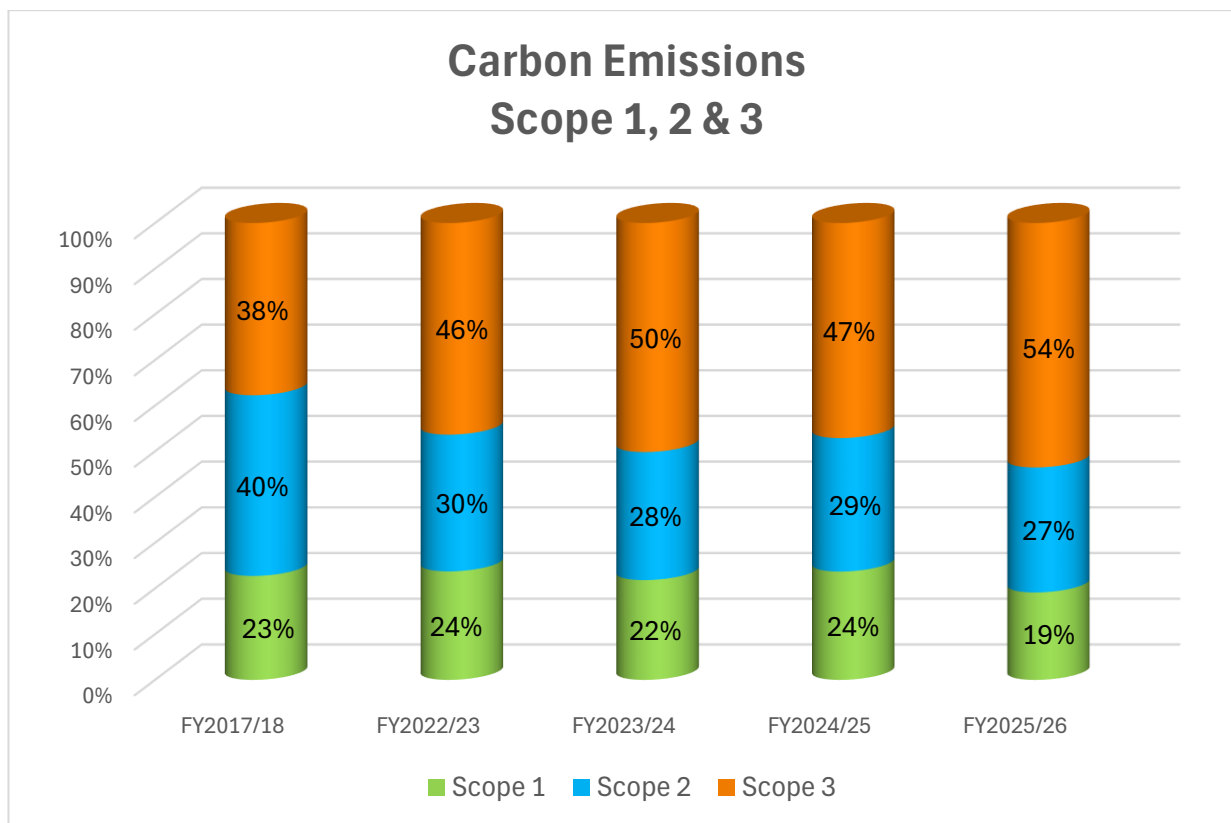
Table 3. Emissions per FTE over time.

Scope	FY2017/18 (tCO <sub>2</sub> e per FTE)	FY2023/24 (tCO <sub>2</sub> e per FTE)	FY2024/25 (tCO <sub>2</sub> e per FTE)	FY2025/26 (tCO <sub>2</sub> e per FTE)	% Change from Base Line
1 & 2	5.7	2.2	2.0	1.9	-67%
1, 2 & 3	9.1	4.4	3.7	4.0	-56%

Table 4. Emissions over time per £m Turnover.

Scope	FY2017/18 (tCO <sub>2</sub> e per £m Turnover)	FY2023/24 (tCO <sub>2</sub> e per £m Turnover)	FY2024/25 (tCO <sub>2</sub> e per £m Turnover)	FY2025/26 (tCO <sub>2</sub> e per £m Turnover)	% Change from Base Line
1 & 2	43.4	15.3	12.2	11.2	-74%
1, 2 & 3	69.8	30.7	23.0	24.2	-65%

Figure 2. Emissions over time by scope and corresponding percentage share



Ellis has achieved a significant reduction of approximately 57% in its Scope 1 and 2 emissions from FY2017/18 to the current year. Scope 2 emissions now only account for 27% of the total emissions compared to 29% in FY2017/18.

Scope 3 emissions have increased in FY2025/26, primarily due to the expanded reporting boundary, which now includes a more refined calculations, such as well-to-tank emissions associated with fuel and energy-related activities.

Figure 3. Emissions over time split into categories. Small contributors are not given data labels.

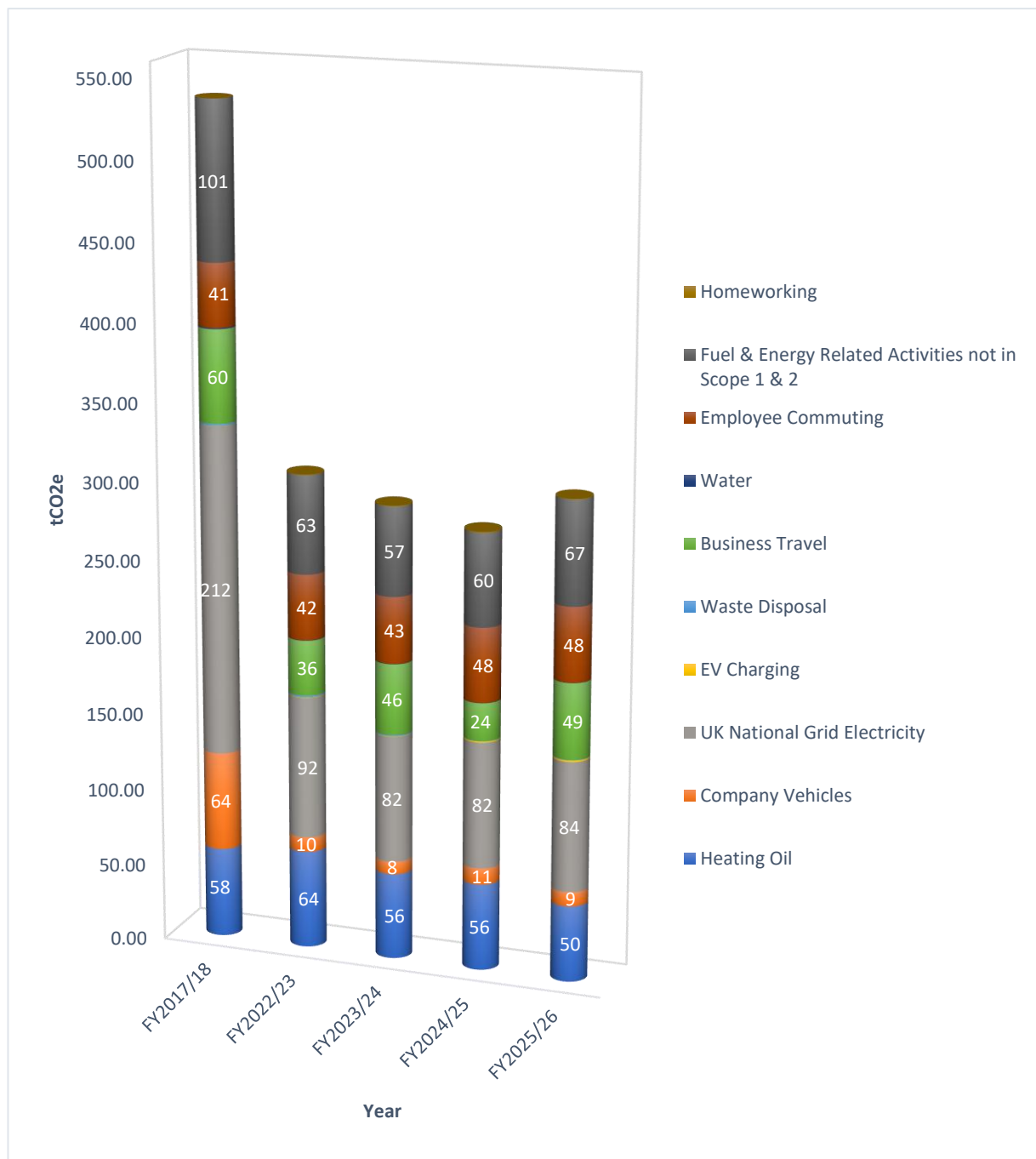
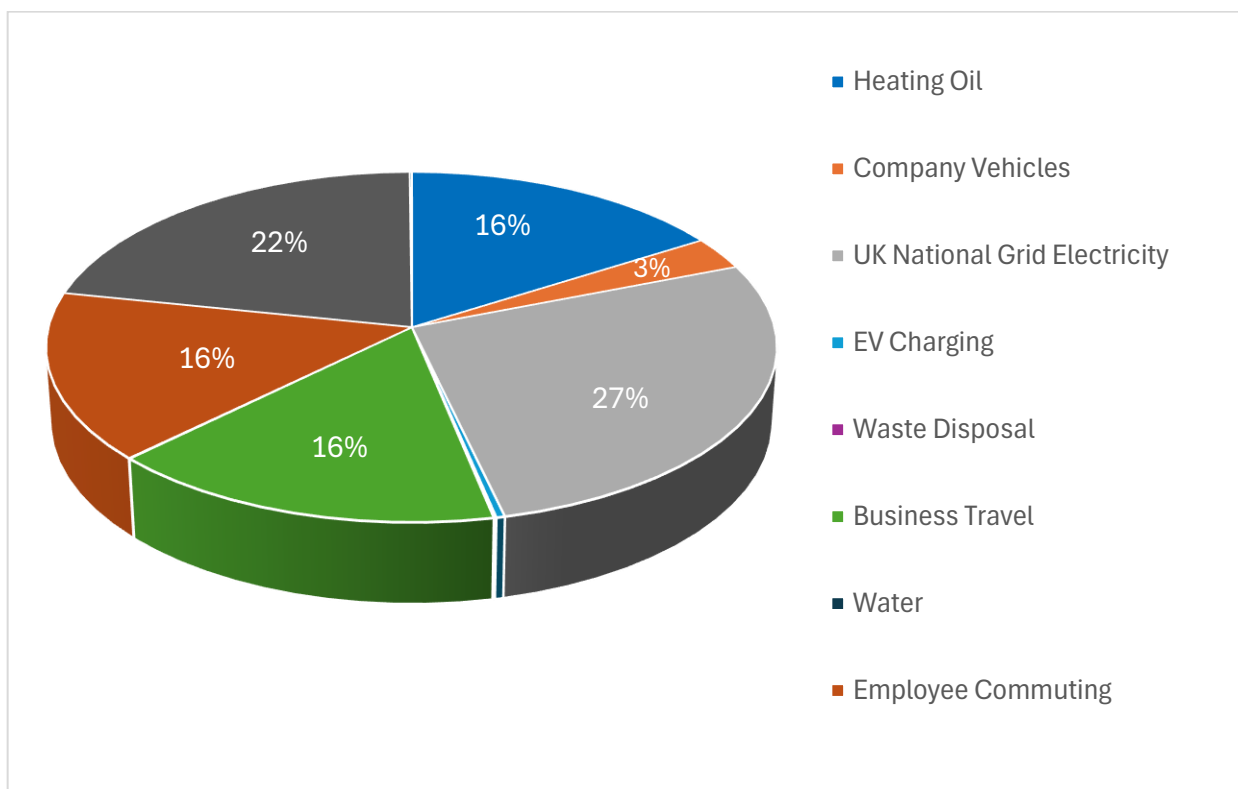


Figure 4 breaks down emissions into categories demonstrating the three largest contributors Ellis GHG emissions are:

1. UK National Grid Electricity (84 tCO<sub>2</sub>e, 27%)
2. Fuel & Energy Related Activities Not Included in Scope 1 & 2 (67 tCO<sub>2</sub>e, 22%)
3. Heating Oil (50 tCO<sub>2</sub>e, 16%)

\* Green = Scope 1, Blue = Scope 2, Orange = Scope 3

Figure 4. Emissions by categories as a percentage FY2025/26.



While Scope 1 and Scope 2 emissions remain relatively stable, the FY2025/26 emissions profile continues to be largely influenced by energy consumption and associated indirect emissions. The results highlight the importance of maintaining ongoing energy-efficiency measures across site operations while continuing to explore opportunities for further emissions reductions through improved energy management, operational efficiencies, and longer-term sustainability initiatives throughout the value chain. A new business objective for the next reporting year is to create an energy strategy for the next 5 years.