

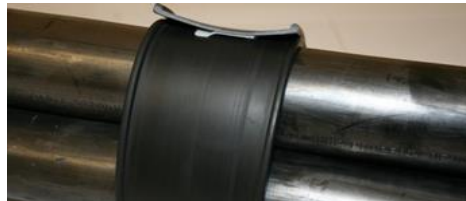
## Flexi-Strap™

### Installation Instructions

1) Remove the liner from the centre of the coiled Flexi-Strap. Remove the blue securing tape and straighten the Flexi-Strap.



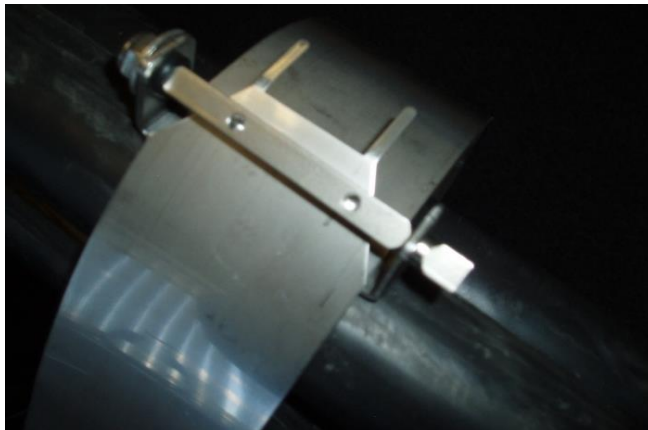
2) Place the liner in the correct position along the cables. Wrap the liner around the cables with the side ridges on the outside of the assembly. Ensure that the tongue end goes on the inside.



3) Attach the special tool onto a 1/4" or 6mm ratchet handle. The special tool is supplied by Ellis - although a standard socket can be used (7mm, 12 point), the special tool is strongly recommended as it allows the installer to visually confirm the square is correctly aligned (step 7). This simplifies and speeds up installation.



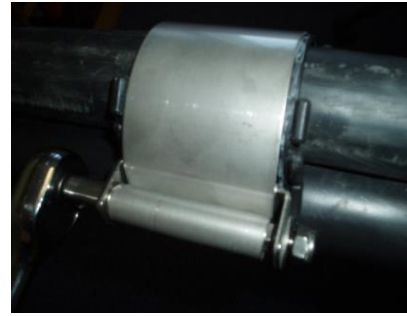
4) Position the Flexi-Strap over the Liner (where appropriate) and wrap around the cables, ensuring that the strap end passes under the square spindle each time. For Standard Duty the strap is wrapped twice around the cables, for Heavy Duty, the strap is passed around the cables three times.



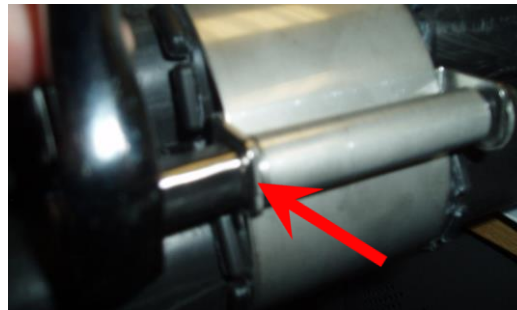
5) Pass the 2 tangs of the end of the strap through the 2 holes in the square spindle and bend over the spindle tightly.



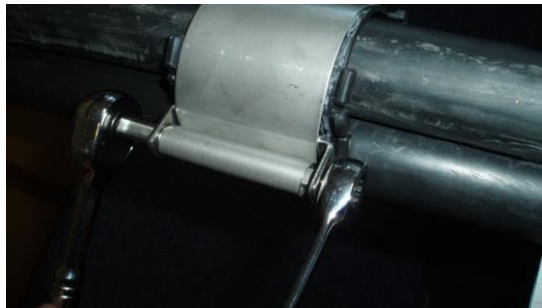
6) Using the 1/4" ratchet begin to turn the square end of the spindle clockwise, ensuring that the strap end remains in the spindle.



7) When the strap is tight around the cables, the square ratchet tool must be parallel to the top of the frame. This will ensure that the square spindle is 'in line' with the square holes in the frame.



8) Using a 10mm spanner tighten the Nyloc nut at the other end of the spindle, thus drawing the spindle through the frame assembly.



9) When correctly installed the square spindle should be in full location with the square hole in the frame.

