

ELLIS

Holding Power

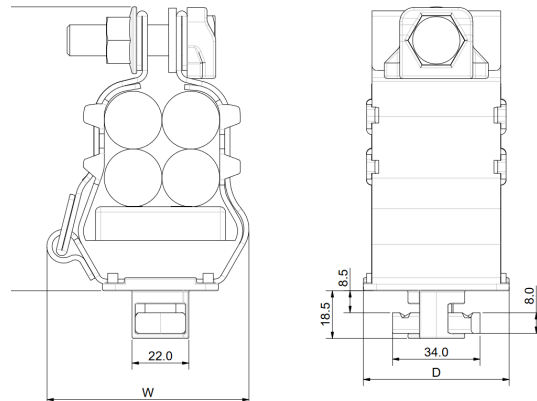
DATA SHEET

EMPEROR QUAD TWIST FOOT

- BASE FIXING KIT DESIGNED FOR FAST INSTALL ON 41X41 AND 41X21 UNISTRUT CHANNEL/LADDER
- CLEAT COMES WITH ALL FIXINGS IN PLACE READY FOR INSTALL, NO EXTRA FIXINGS ARE REQUIRED ON SITE
- FIXING KIT CAN BE SUPPLIED IN A4 STAINLESS STEEL, GALVANISED STEEL OR ZINC PLATED STEEL
- SHORT CIRCUIT AND MECHANICALLY TESTED TO IEC 61914 - REFER TO EMPEROR QUAD DATA SHEET



EMPEROR TWIST FOOT OPTIONS



SINGLE FIX TWIST FOOT: EQ19 TO EQ49

PART NO.	CABLE RANGE QUAD		DIMENSIONS (mm)			WEIGHT (g)
	MIN ϕ (mm)	MAX ϕ (mm)	W	H	D	
EQ19-24TFM12	19	24	78.5	110	54	628
EQ24-28TFM12	24	28	78.5	110	54	499
EQ26-30TFM12	26	30	79	116	54	527
EQ31-36TFM12	31	36	92	136	54	696
EQ36-40TFM12	36	40	92	136	54	571
EQ40-45TFM12	40	45	111	150	54	849
EQ44-49TFM12	44	49	111	150	54	760

X DENOTES FIXING MATERIAL, OPTIONS ARE AS FOLLOWS:

4 = A4 STAINLESS STEEL

G = GALVANISED STEEL

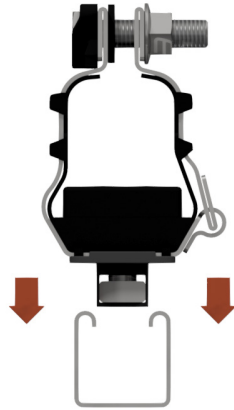
Z = ZINC PLATED STEEL

E.G A EQ19-24 WITH STAINLESS STEEL TWIST FOOT FIXINGS BECOMES:

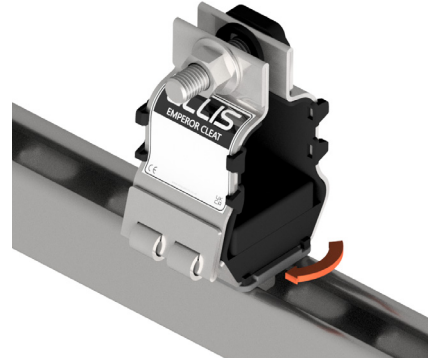
EQ19-24TFM12-4

INSTALLATION OVERVIEW

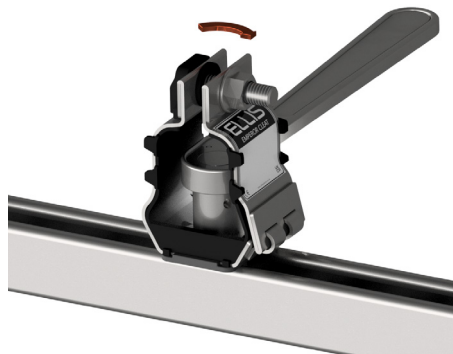
SINGLE FIX TWIST FOOT: EQ19 TO EQ49



1) Lower the cleat through the gap in the channel.



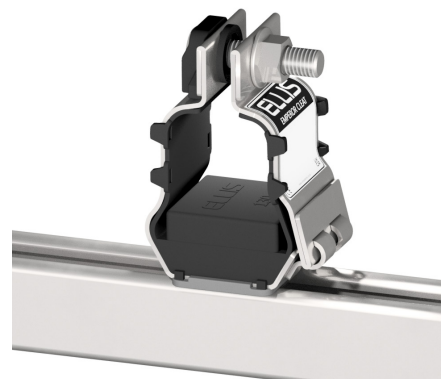
2) Once lowered twist the cleat 90°.



3) Tighten the M10 bolt in the base of the cleat.



4) As the bolt is tightened the channel nut will move up the twist foot base and grip onto the channel.



5) The cleat is now securely fastened to the structure and is ready to accept the cables.

This data sheet is subject to change without notice. The information provided has been generated in laboratory conditions, as such results in use may vary.